

### Download the Software

[ If this file was opened from your computer instead of the Internet, this "Download the Software" step has likely already been completed. ]

Go to <http://dbgallery.com/downloads> and press the **Enterprise Version** link, as shown below, and either Save to your disk drive or choose Run.

#### DBGALLERY DOWNLOADS

The Enterprise and Personal Package download options below are FREE 30-day trial versions. They may be purchased by visiting our [Purchase](#) page.

\*\*\*Current version is 5.0.4.5, released March 12, 2012. See [Recent Updates](#).\*\*\*

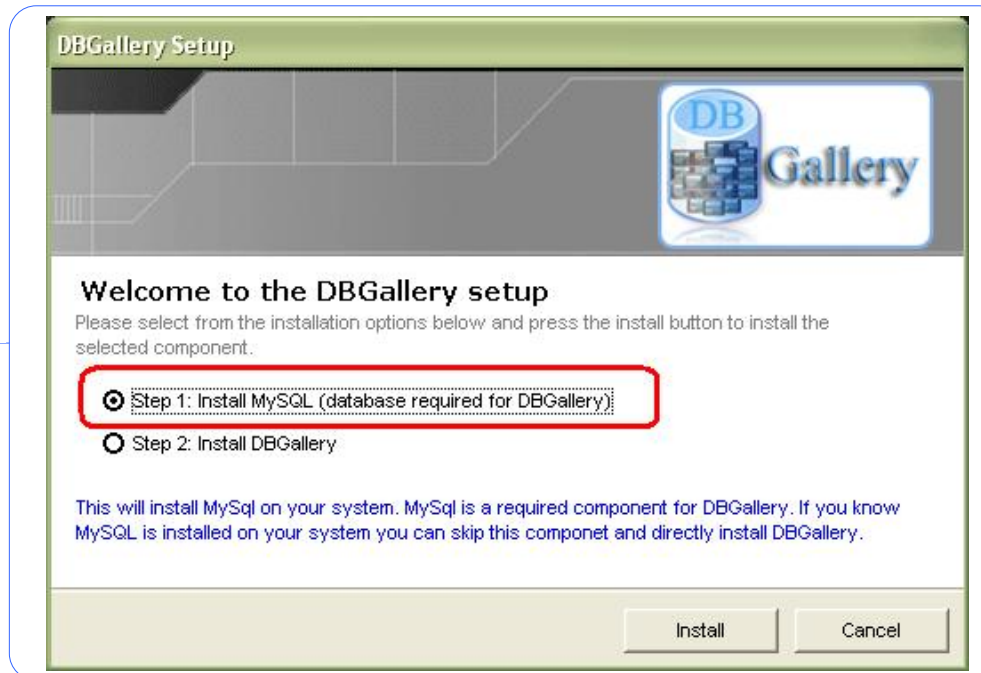
##### Enterprise Version: Multi User

Enterprise Version	Size	Includes:	Notes:
Enterprise Version [See Enterprise page for description.]	39 MB	Multi-User DBGallery and MySQL (5.0.4.5)	Note: A complete Enterprise/Office version installation. If you already have MySQL installed (see the MySQL Requirements below) step 1 may be skipped during the installation.

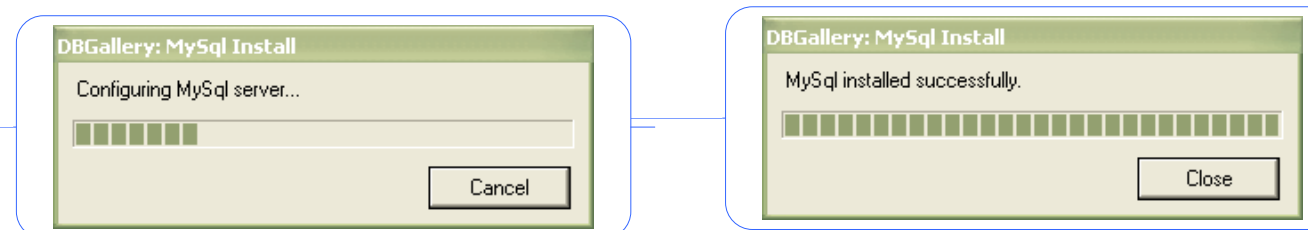
### Installing on the Server

[ The server is any network computer where the database resides and is visible to other computers using the database. ]

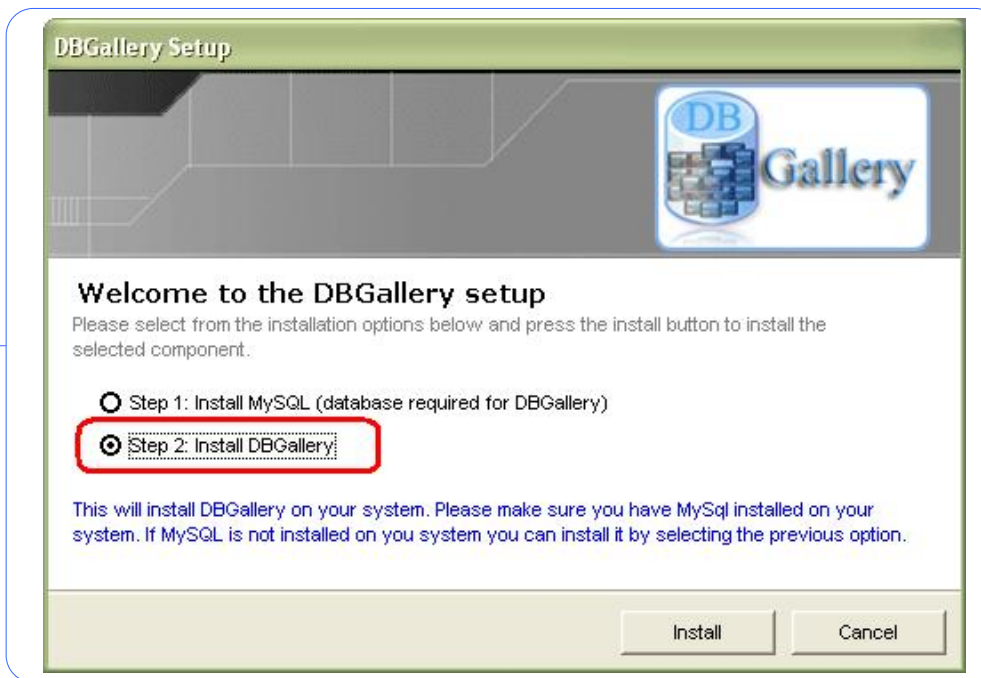
Run the downloaded DBGallerySetupEnt.exe, then choose Step 1 and press Install as shown below.



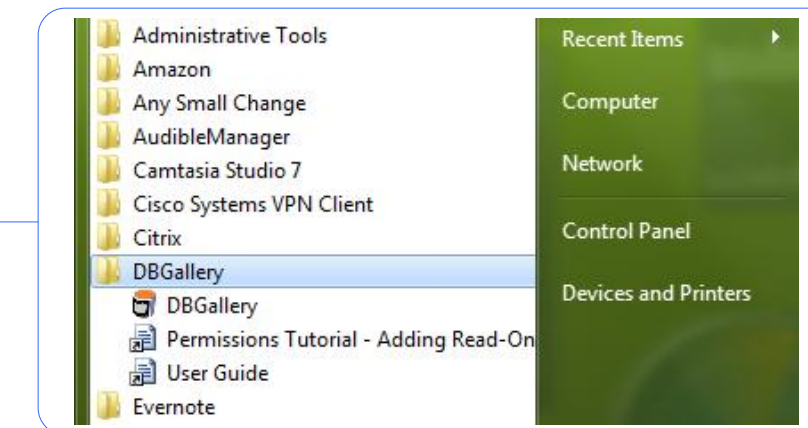
A small window will appear indicating progress of the database install. When completed press Close. Control will return to the setup dialog.



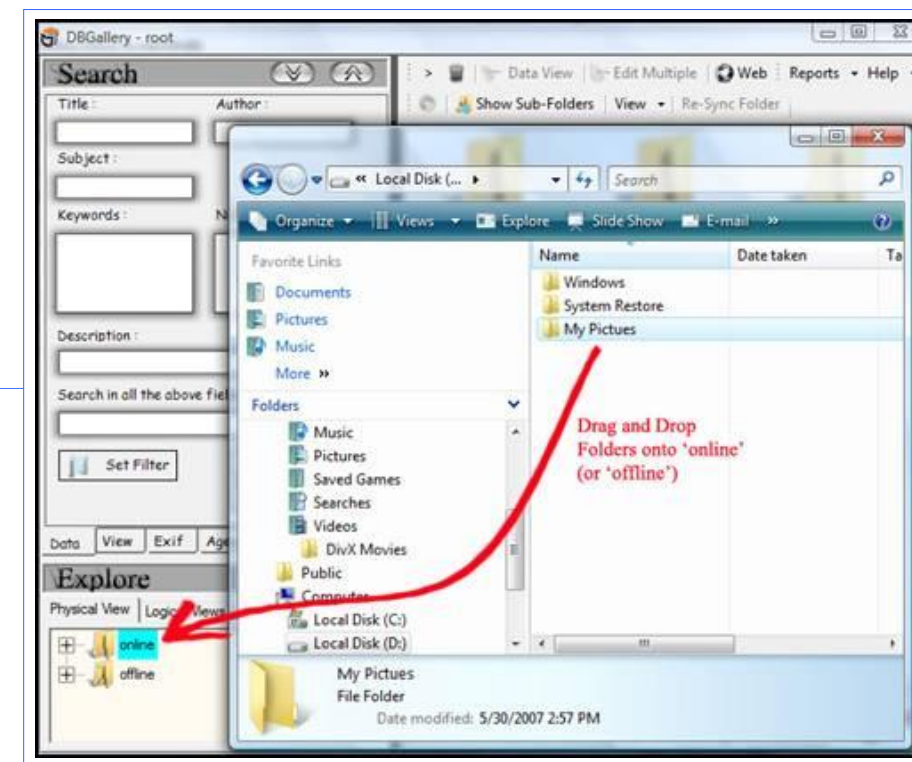
Next, choose Step 2: Install DBGallery, as shown below.



Run DBGallery

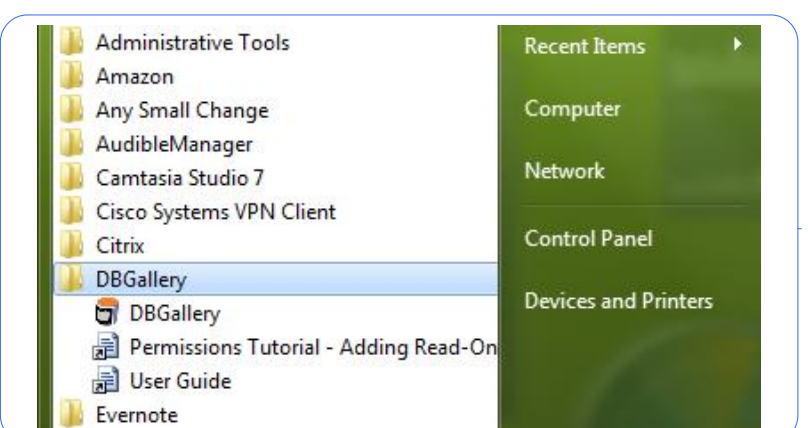


Add Initial Images (as shown in the diagram when DBGallery starts up.)



Permissions (Optional)

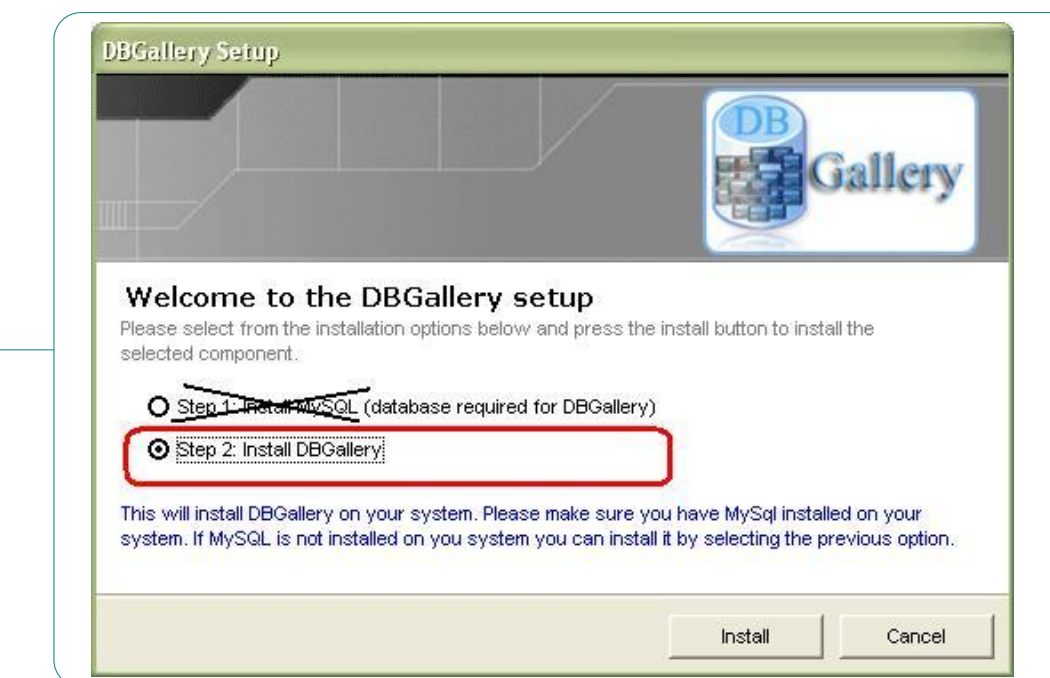
At this point access permissions may be set for specific users. This is outside the basics of installation but is included in the Windows Start menu for DBGallery.



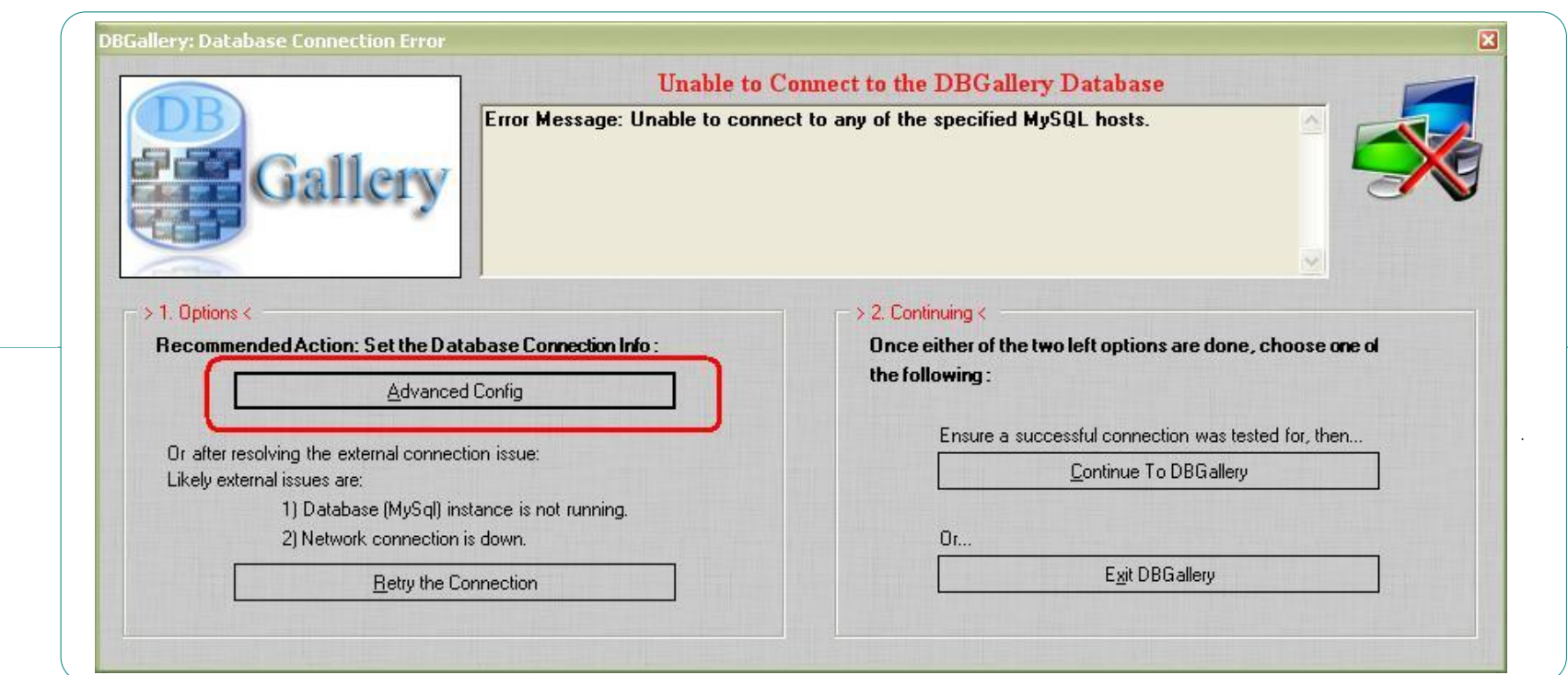
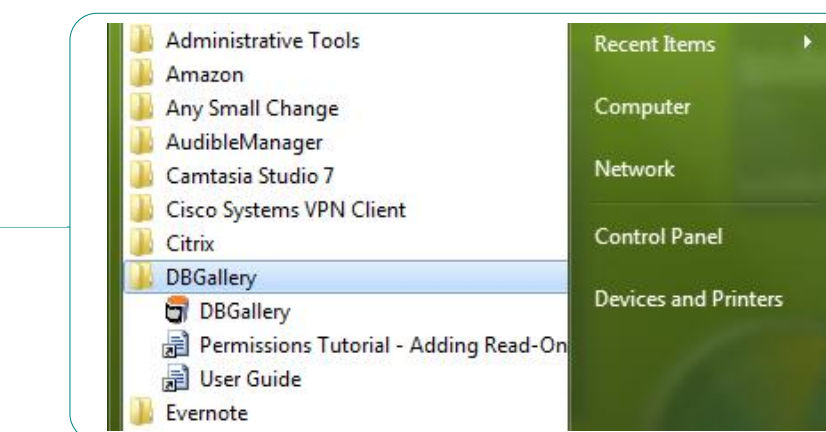
### Installing on Client Computers

Install just Step 2 using the same download file from earlier or by downloading just the Update from the same DBGallery download page at <http://dbgallery.com/downloads>

Run DBGallery



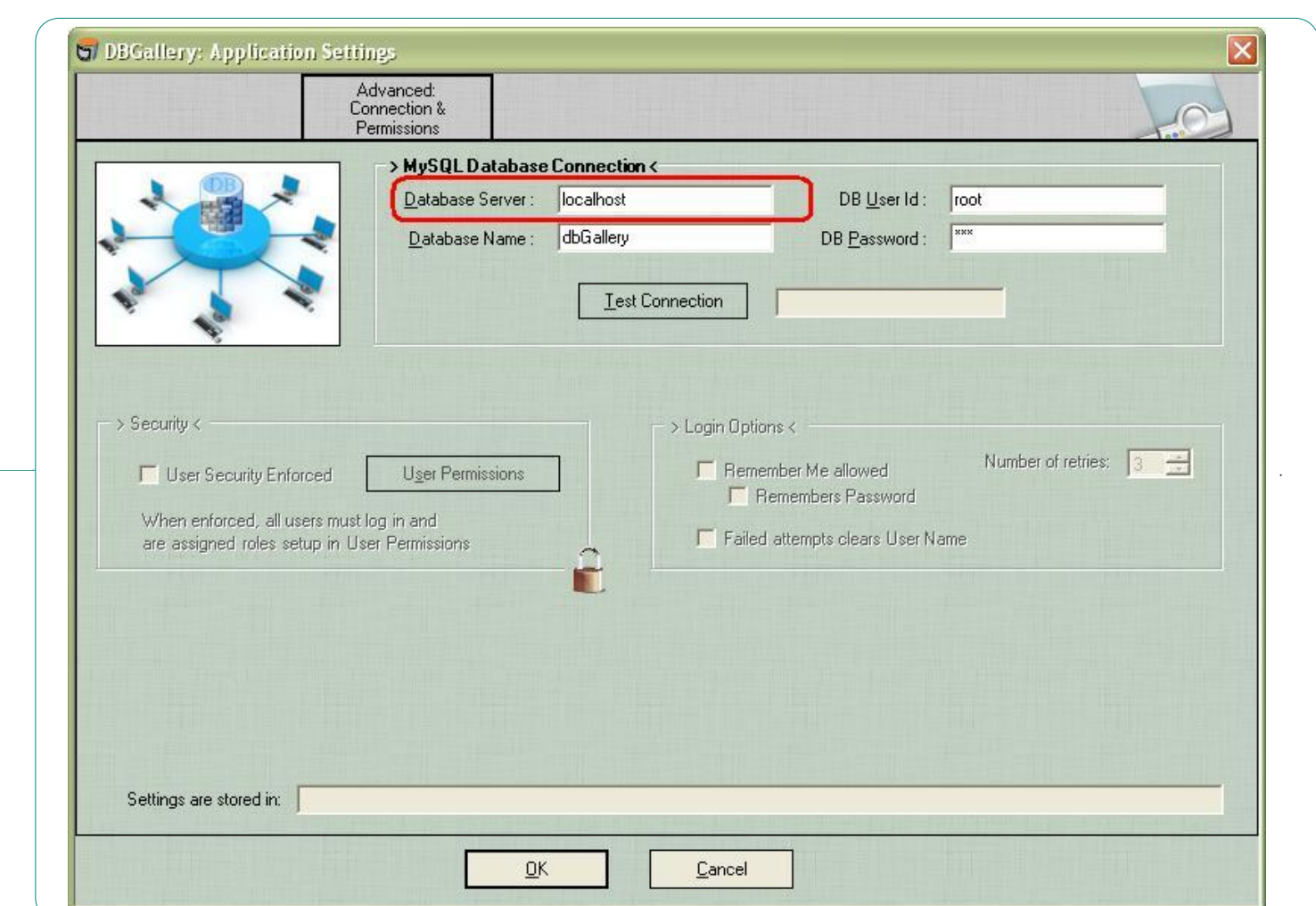
Choose "Advanced Config" when the following window appears.



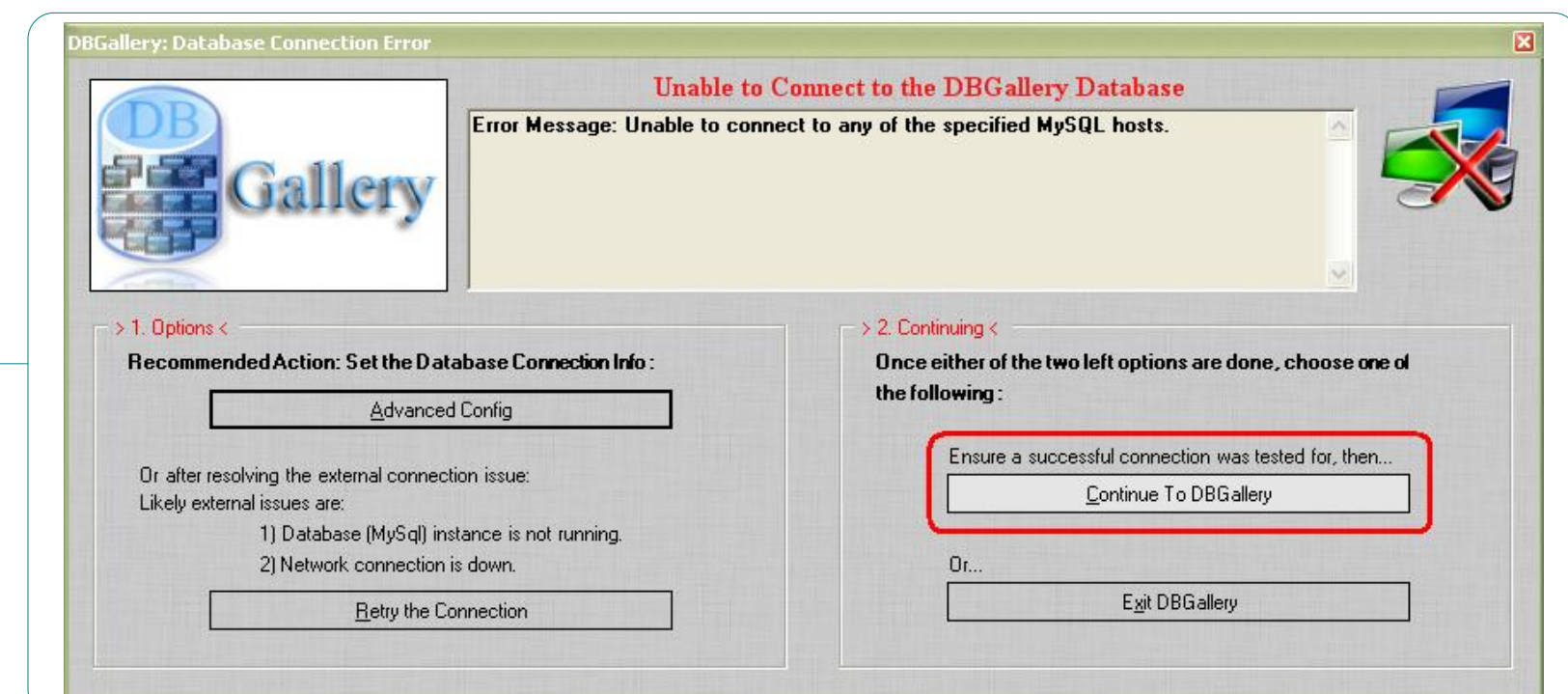
Key the "Database Server" name. Typically only update "localhost" to the name of the server DBGallery was first installed on. It may be the name of any computer a DBGallery database resides at. (Typically the Database Name stays as dbGallery that may have been set differently on the server. If unknown, leave it as dbGallery.)

Press "Test Connection" as seen in the window directly above. This text to the right of the button should show "Connected"

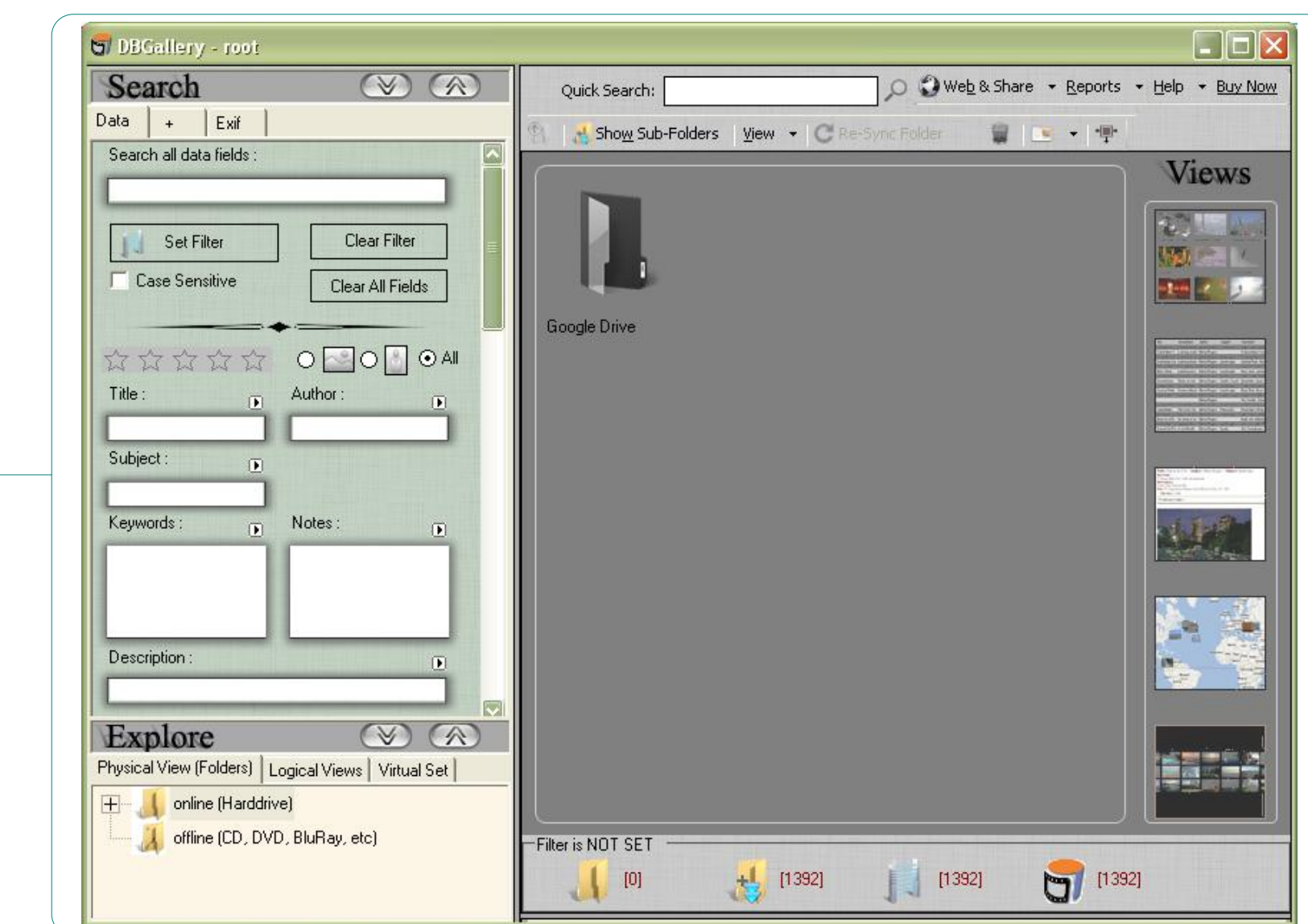
Press Ok



Press "Continue to DBGallery"



DBGallery will then be shown with any folders already added to the database on the server.



Permissions (Optional)

If access permissions had been setup then the following login dialog may appear prior to DBGallery loading and showing image folders.

